

**Timberland Dirt Devils ATV Club Inc.**

26993 State Hwy 64  
PO Box 56  
Akeley, MN 56433-0056

rideakeleyTDD@gmail.com  
www.Timberlanddirtdevils.com  
Facebook: @DirtDevilsRideAkeley

The Timberland Dirt Devils is an ATV/UTV power sports club from the Akeley, MN area that was established in 2006. We are a not-for-profit organization whose Mission is to support the sport of trail riding. This is accomplished with our volunteer equity and funds, Youth Education Safety Program, user friendly trail rides, fund raising events, GIA-ATV trail maintenance, Trail Ambassadors, public education elements, special events, community service and other endeavors for the sport.

(See our Web Page for membership material)

Presently, we maintain appr. 42 miles of ATV use-able trails on the east side of Hwy 64 in the Paul Bunyan State Forest. This is 26 square miles covering 16,700 acres. We coordinate these trail functions with our local sponsor, Hubbard County Natural Resource Management & the State of Minnesota Department of Natural Resources: Div. of Parks and Trails.



**ATV/UTV TRAIL DEVELOPMENT & MAINTENANCE:**

The TDD have 42 miles of ATV Trails to monitor and maintain on the east-side of Hwy 64 in the Paul Bunyan State Forest and Hubbard County.

The efforts to keep our trails intact are endless, from good assessments planning, appropriate funding requests, environmental issues monitoring, appropriate trail footprints, to weekly safety and maintenance checks, good trail maintenance plans and user-friendly signage.

These are all coordinated to provide a positive user experience!



**MN-DNR VOL. TRAIL AMBASSADORS PROGRAM:**

The TDD are proud to support the Trail Ambassadors Program. Annually we have supported 3-4 club members in their volunteer participation in this statewide OHV program. The program exists to promote safe, environmentally responsible operation of OHVs through informational & educational contacts and monitoring efforts.

**Marketing & Education:**

To be successful and have a positive view for the future of the sport, a percentage of ongoing efforts to do so is a MUST.

Our Team Supports: Youth Scholarships-Trail Rides, & Community Programs.



Users of this map agree and acknowledge that: The Timberland Dirt Devils, Bismarck Map Company, Hubbard County, MN and the State of MN cannot be held liable for accuracy of map materials provided.

Additionally, this publication is partially funded through the Minnesota Trails Assistance Program and advertising revenue. The Timberland Dirt Devils, Bismarck Map Company, Hubbard County-MN, State of Minnesota and the Department of Natural Resources can neither endorse the products or services advertised nor accept any liability arising from the use of these products or services.

**LONEY Sales & Service**

218-547-1412

HOURS: Mon-Fri: 8:00 a.m. - 5:00 p.m.  
Sat: 9:00 a.m. - 2:00 p.m.  
8065 State 371 NW  
PO Box 1090, Walker, MN 56484

CFMOTO

1 YEAR WARRANTY

BEST PRICE GUARANTEE

loneysales.com

0% FINANCING AVAILABLE

**LAKE GEORGE**

Right on the Trails!

INTERSECTION OF HWY 71 & CNTY 4

WOODLAND STORE

HOURS: 7:00 AM-8:00 PM [SUN.-THUR.] 7:00 AM-9:00 PM FRI. & SAT.

GAS-OIL-RESTROOMS-FOOD-BEVERAGE

Complete selection of OFF-SALE TRAIL PARKING-LIVE BAIT-FIREWOOD

218-699-3033

Make us a Stop!

**SPORTING GOODS**

Fish Houses • Bait

SmokeyHills.com Hwy 71 • Park Rapids

**Summer Hours: 7 am - 9 pm**

Motel • Camping • Bar  
Groceries • Fuel - Reg & Prem.  
Propane • Coffee & Ice Cream  
Licensing

23

**CROW WING INN**

Motel and RV Park

Open year round!

Andy & Renee Klinghies

1-218-652-3600  
arklinghies@yahoo.com

117 Hwy 34 Nevis, MN 56467

A: 507-438-0656 cell  
R: 507-438-6717 cell

20

**UP NORTH POWER & SPORTS**

Sales-Service-Parts

218-237-5670

POLARIS

TORO

Count on it.

Beta RACING

**Laporte GROCERY & MEATS**

YOUR FULL SERVICE STORE

USDA Choice Meat Products - Full Line of Groceries

STOP IN FOR

Soft serve ice cream or a fresh ground chuck burger!

218-224-2202

Downtown Laporte

4

**Mack's Small Town SMOKE HOUSE**

Over twenty varieties of Brats, Summer Sausage & Bacon

A full line of Smoked Products

Laporte Grocery • 218-224-2202

3



**Emmaville Inn**

1-218-732-8544

facebook.com/emmavilleinn/

emmavilleinn@gmail.com

28021 CNTY 4, Park Rapids, MN 56407

21

**Breezy Pines Resort and Campground**

ATV Off-Road Riding  
Fishing -- Hiking - Swimming  
Renting: Cabins, Campsites and Boats.

Fall & Winter Attractions

218-652-4286

breezypinescabins@gmail.com

www.breezypinescabins.com

25138 Cnty 2, Nevis, MN 56466  
(Just 4.3 Miles North of Nevis)  
On "Crooked Lake"

21

Just 3 miles North of Akeley, MN on Hwy. 64

218-652-2964  
Toll Free: 800-725-1579

STOMPING GROUNDS LODGE-CAMPING

Located in The Paul Bunyan State Forest

ATV & DIRT BIKE TRAILER PARKING

Camping & RV Sites  
Located ON the Trail Systems  
Full Service Bar & Restaurant  
Pool Table & More  
Bring the Family!

www.stompinggroundslodge.com

Best Burger in The Forest!

**BENEDICT OUTPOST**

GAS LIQUOR BAIT BOAT STORAGE BAR & GILL

Mike Diekmann 218-208-1047 Jackie Diekmann 218-760-7210

Outpost Phone 218-224-5335  
34365 County Rd 38  
Laporte, MN 56461

4

**Timberland DIRT DEVILS**

ATV & UTV Riders Club  
RIDE AKELEY



**Red River Liquor co.**

Bar & Grill  
Liquor Store

Open 7 Days/Week

31075 State 34  
Akeley, MN  
218-652-5222

13

Trail Access  
Large Parking Lot  
redriverevents.com

GLUTEN-FREE AVAILABLE • SOMETHING FOR EVERYONE!

**ZAPPY'S Cafe**

BREAKFAST • LUNCH • DINNER

218-652-2233

Home Style Biscuits & Gravy, Stuffed Hashbrowns, Juicy Burgers, BBQ Ribs, Braasted Chicken, Homemade Desserts, & Many More Mouth Watering Selections!

FAMILY FRIENDLY - CATERING AVAILABLE

Open 7 Days a Week

Dine-in, Take-Out & Curbside Pick-Up Available

AT THE JUNCTION OF HWY 34 & 64 - AKELEY, MN

15

**The Adventure Starts HERE!**

LAKES AREA Powersports

8322 State 371 NW  
1 1/2 miles north of Walker on Hwy 371  
Hours: Mon-Fri 8am-5pm  
Sat 8am-1pm - Closed Sun

Check us out on Facebook at Lakes Area Powersports and on Instagram lakes\_area\_powersports

218-547-1558 | www.lakesareapowersports.com

5

**First National Bank**

Walker, Akeley, Longville, Remer, Hackensack  
Backus, Pequot Lakes, Crosslake, Baxter

FDIC

fnbnorth.com

10

**SPENCER ROSS POST #134 AMERICAN LEGION**

Food Meat Raffles  
Bingo Pull Tabs  
Game Room

Facebook.com/walkerlegion134

OPEN TO THE PUBLIC

407 Front St. \* Walker, MN \* (218)-547-1011

7



**T&M express**

Locally Owned Since 1978

Gasoline & Diesel Fuels  
Non-Ethanol Premium  
Coffee & Cappuccino  
Fresh Bakery Goods  
Hot & Cold Sandwiches  
Snacks & Beverages  
Clean Restrooms

NEVIS  
Downtown  
218-652-3115

AKELEY  
Hwy 34 & 64  
218-652-3676

PARK RAPIDS  
Hwy 34 & CR 6  
218-732-8853

16

**Akeley Campground & City Park**

Camp in the Peaceful Beauty of 11th Crow Wing Lake

28 RV Sites . 30 Amp. & 50 Amp. electrical & water.  
Grassy Tent Sites . Showers & Restrooms  
Boat Access . Swimming Beach . Playground

Daily, Weekly, Monthly, and Seasonal Rates.  
Just off the Heartland Trail and within walking distance of downtown Akeley.

Reservations available online!  
akeleycitycampground.com  
akeleycitycampground@outlook.com  
1-218-252-4570 or 1-218-652-2465

18

**COUNTRY INN WALKER**

Complimentary Breakfast  
Indoor Pool & Whirlpool  
Pet Friendly

Rubber Duckies Welcome!

(218) 547-1400  
www.WalkerCountryInn.com

9

**BENSON'S THE LEGACY OF AN**

EAT IN OR CARRY OUT

1896

218-547-1896

Walker, MN

EATING & DRINKING EMPORIUM

www.bensonsemporium.com

8

**Lakes Community Cooperative Akeley-CENEX**

Located on the East Edge of Akeley on Hwy 34/Hwy 64

(218) 652-2665

ATV Trail Access  
ATV Trailer Parking  
Non-Resident Trail Permits  
Non-Ethanol 91 Fuel  
Off Road Diesel  
Diesel Fuel  
Local Trail Maps  
Clean Restrooms  
Snacks & Beverages  
Live Bait

Open 6am -10pm Daily

14

**The Akeley Muni**

Where Paul Wets His Whistle!

On Sale Hours:  
Mon.-Sat. 9:00am-1:00am  
Saturday's: 2 for 1's... From 11:00am-12:00pm  
Sunday 11:00am- 8:00pm

Off Sale Hours:  
Mon.-Sat. 9:00am-10:00pm  
Sunday 11:00am- 8:00pm

akeleycity.com (218) 652-2465

\* Food  
\* Pool  
\* Darts  
\* Pull Tabs  
\* E-Tabs

17

**Support These Businesses!**

They All support the "Trails"

PAUL BUNYAN STATE FOREST

MINNESOTA DEPARTMENT OF NATURAL RESOURCES

About the Paul Bunyan State Forest of Minnesota: 105,000 acres, covering 164 sq. miles, making up part of northern Minnesota's north woods. Created in 1935, it started small in the early 1900's primarily for the millions of board feet of timber. The logging days lasted 20 years, with its peak creating 8-10 major logging camps and 4-5,000 men on the payroll. The central hub of all the lumber processing was on Eleventh Crow-Wing Lake and the City of Akeley.

The Term, Off-Highway Vehicle (OHV), includes All-Terrain Vehicles (ATV's & UTV's), Off-Highway Motorcycles (OHM's) and Off-Road Vehicles (ORV's). For complete details of Off-Highway Vehicle regulations please reference: [www.mndnr.gov/ohv](http://www.mndnr.gov/ohv)

The above site is the MASTER to all things OHV in MN.

Grant-in-Aid: these areas receive grants from the MN DNR to maintain ATV trails.

For ATV trail maintenance components: including trail foot-print & surfaces, signage, safety issues on ATV trails Minimum Maintenance Roads and specific components of Forest Roads related to ATV usage:

East-side of State Hwy. 64 ATV Trails in PBSF are maintained by the  
Timberland Dirt Devils ATV Club.  
Contact: RideAkeleyTDD@gmail.com

Ride Akeley



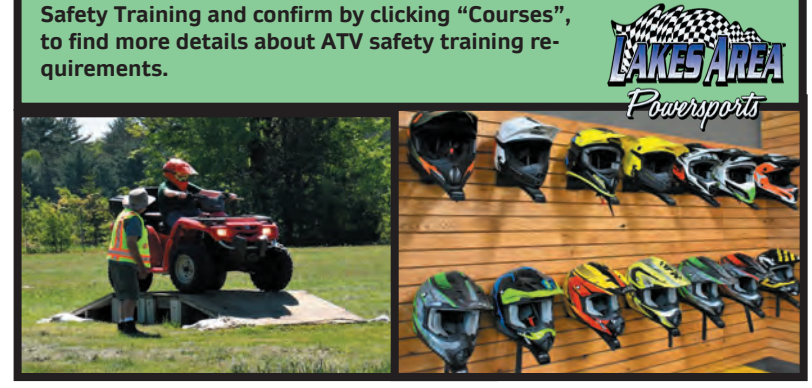
**YOUTH ATV SAFETY EDUCATION:**

The TDD conducts an annual youth ATV educational day every June for interested area youth. We support members to become educators and encourage active practice once certified by the DNR Enforcement Division.

We average 25-30 students, which we assist with all course fees and provide a "Helmet and goggle set" for each student that successfully completes on of our classes.

Now, we have support over 200+ fee helmets and goggles to youth.

Check on-line at MNDNR.gov / OHV under ATV Safety Training and confirm by clicking "Courses", to find more details about ATV safety training requirements.



**ROUND RIVER 2023 ATV 2025 TRAIL SYSTEM**

**TIMBERLAND DIRT DEVILS**

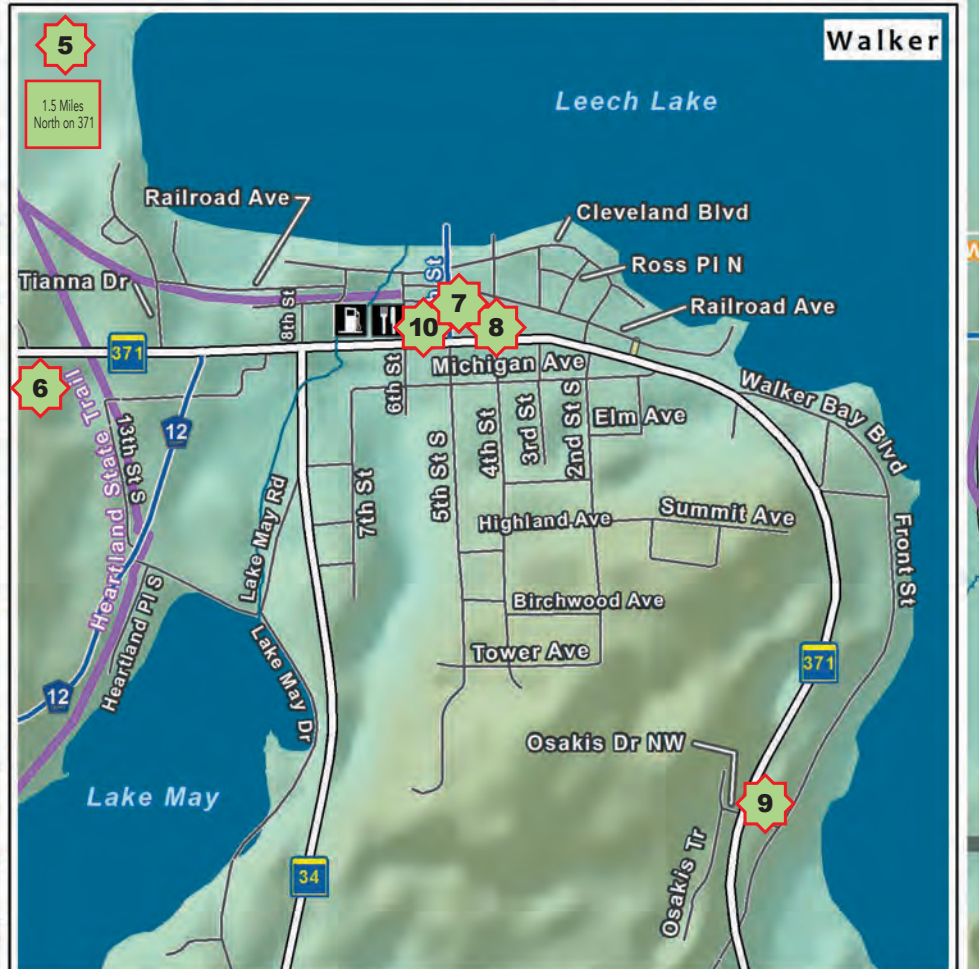
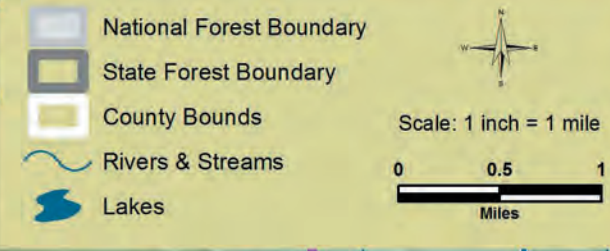
ATV & UTV RIDERS CLUB  
RIDE AKELEY

PAUL BUNYAN STATE FOREST-MINNESOTA





# ROUND RIVER ATV Trail System



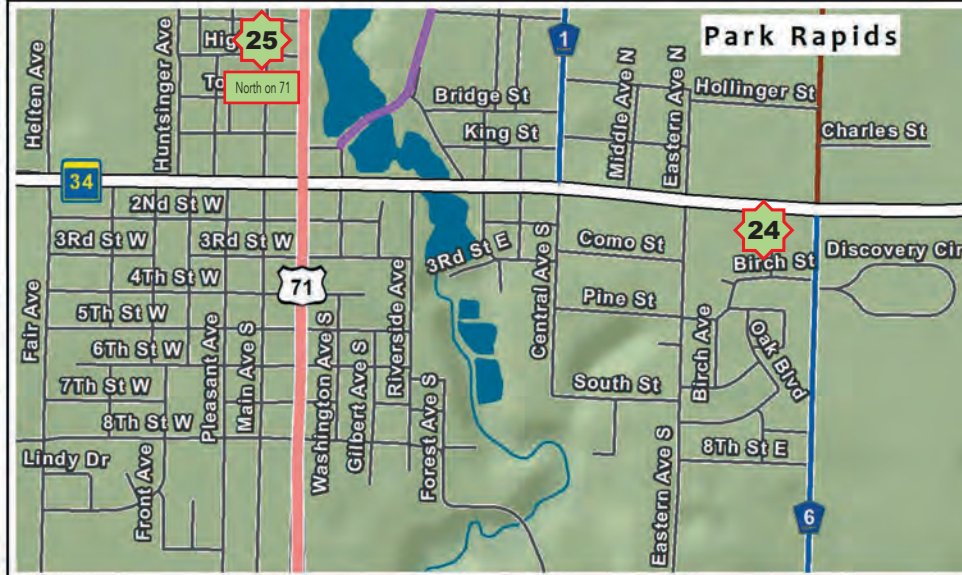
**STAY ON TRAIL**  
Minnesota Department of Natural Resources

**RECOMMENDED  
30  
SPEED LIMIT  
ON FOREST ROADS  
Keep Right**

**EMERGENCY call  
9-1-1**

Hubbard County's Emergency Dispatch Center  
Non-Emergency 218-732-3331

- Campsites
- ATV Riding Allowed
- US Highway
- Parking
- ATV Riding Not allowed
- State Highway
- Gas
- State Trail
- County Highway
- Rest Area
- Dead End
- County Road
- Food
- EMS Intersection Sign
- Township Road
- Shelter
- Forest Road
- Street / Minor Roads
- Bathroom
- Minimum Maintenance Road



Be prepared for your ride: REMINDERS & Double Checks!

- Do not ride alone and have a good "Trail Map"
- Carry a cell phone and/or GPS, with extra batteries.
- Keep mental notes where you are at: trail or road names, location markers, ... stop often and check!
- Have or bring appropriate clothing & water, for your ride.

**F10**  
Emergency Location  
157 UW  
A 6-DIGIT CALL-TO-1-1  
NATIONAL GRID 1400 E3  
APP AT USMAPS.ORG

**6947  
2053**

**2975  
3883**

SMT Trailhead  
UN 679 162  
157 Emergency Coordinates  
CALL 1-1

There are numerous GPS locators in the Forest. 3 & 4 digit signs in the U.S. National Grid. 1400 E3. APP AT USMAPS.ORG

Search for a GPS app for your phone.

This map has Latitude & Longitude in a (DDD) format. As most apps have. Just intersect a North coordinate (side) with a West coordinate (top & bottom) on map sides

In a EMERGENCY these numbers help locate you for assistance.

